



LUCKYSTAR



SMART RGB+CCT STRIP



About this item

- **Hands-Free Voice Control:** The LED strip lights work with both Alexa & Google Assistant. Free up your hands and power your lights on and off, change colors, or adjust brightness with simple voice commands.
- **Wireless Smart App:** The Tuya app offers you advanced control over your led lights and access to incredible features like the customizable DIY mode and a convenient Timer function.
- **Music Sync:** A built-in mic allows the LED lights to sync to any music type. Use our Tuya app or control Box and watch in glee as your lights dance to your favorite songs.

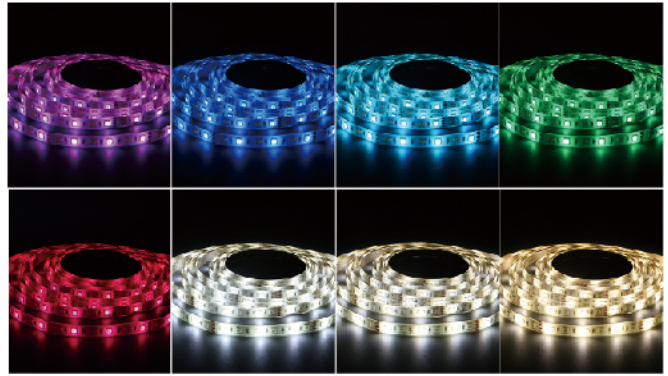
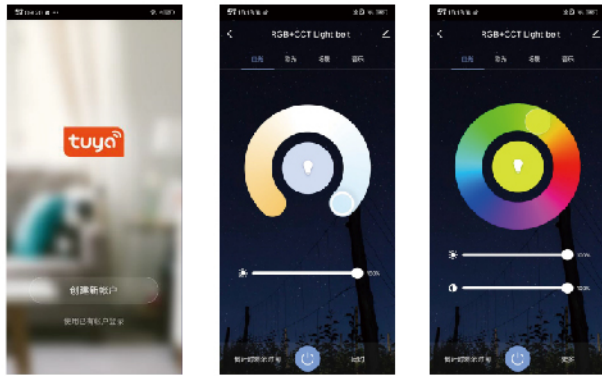
Ambience Light: the smart strip lights are equipped with 5050 LED beads, making them bright enough to illuminate your bedroom, kitchen, porches, and holiday parties.

Note: these LED lights are not waterproof and are designed for indoor use.

- **Easy to Install:** Our all-in-one light kits come with an ETL listed adapter, strong adhesive, and 6 support clips. Simply attach the lights to any dry, clean surface, and reinforce them with the clips for more security.

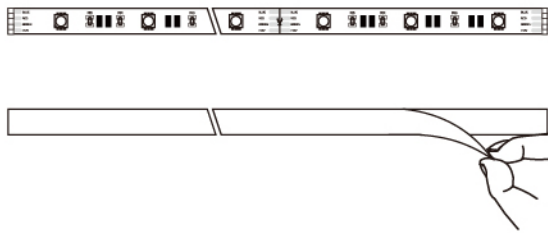


TUYA APP CONTROL

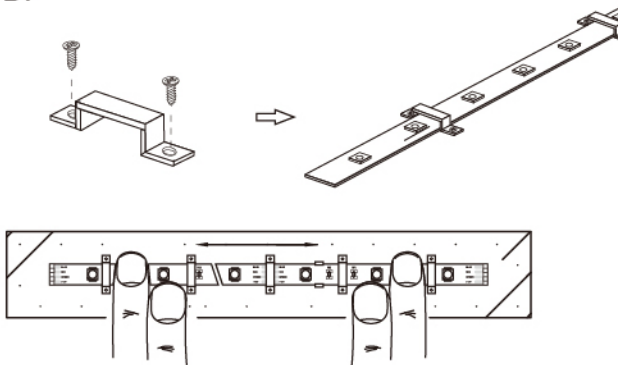


INSTALLATION

A.



B.



PRODUCT PARAMETER

Item Model Number	LS9A139-1-01
Product Dimension LxWxH	3000x12x3mm
PCB Size	12mm
Product Weight	0.27Kg
Color/Finish	White
Included Components	LED strip/Power supply/ Controller/Clip/Screw
Voltage	DC12V
Wattage	12W±10%
IP rate	IP20
Color	RGB+CCT
Driver type	Plug in driver
Dimmable	Yes
Lifetime	35000h
Removable light source	Yes
Replacable light source	NO
Remote control	Optional
Special features	Tuya Wifi

Item Model Number	LS9A139-2-01
Product Dimension LxWxH	5000x12x3mm
PCB Size	12mm
Product Weight	0.39Kg
Color/Finish	White
Included Components	LED strip/Power supply/ Controller//Clip/Screw
Voltage	DC12V
Wattage	24W±10%
IP rate	IP20
Color	RGB+CCT
Driver type	Plug in driver
Dimmable	Yes
Lifetime	35000h
Removable light source	Yes
Replacable light source	NO
Remote control	Optional
Special features	Tuya Wifi